

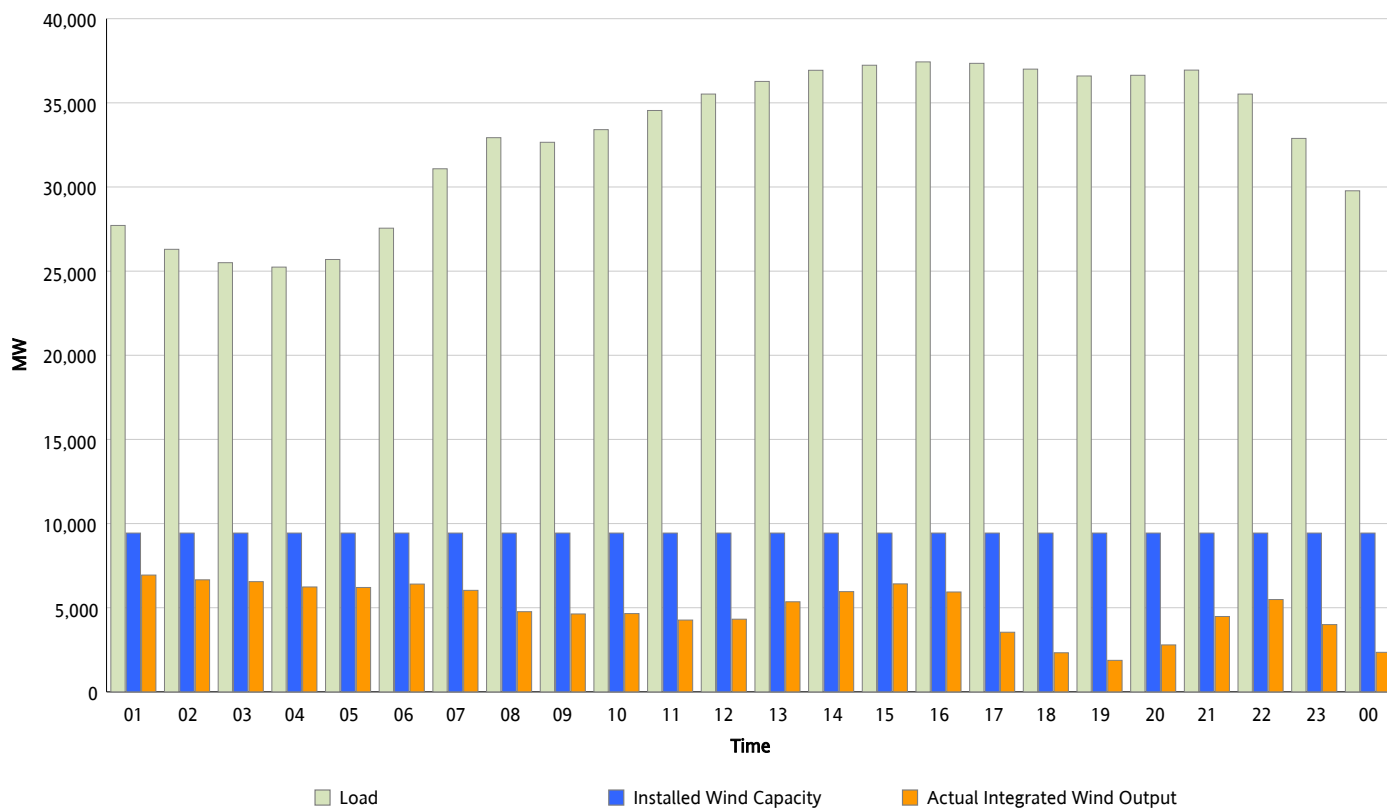


ERCOT Grid Operations

Wind Integration Report : 03/19/2012

| | |
|----------------------|-----------|
| Peak Load | 37,433 MW |
| Load Peak Hour (HE) | 16 |
| Wind Over Peak | 5,936 MW |
| Wind Record 03/18/12 | 7,917 MW |
| Max Wind Value* | 7,332 MW |
| Wind Peak Time | 00:09 |
| Wind Integration % | 25.81 % |

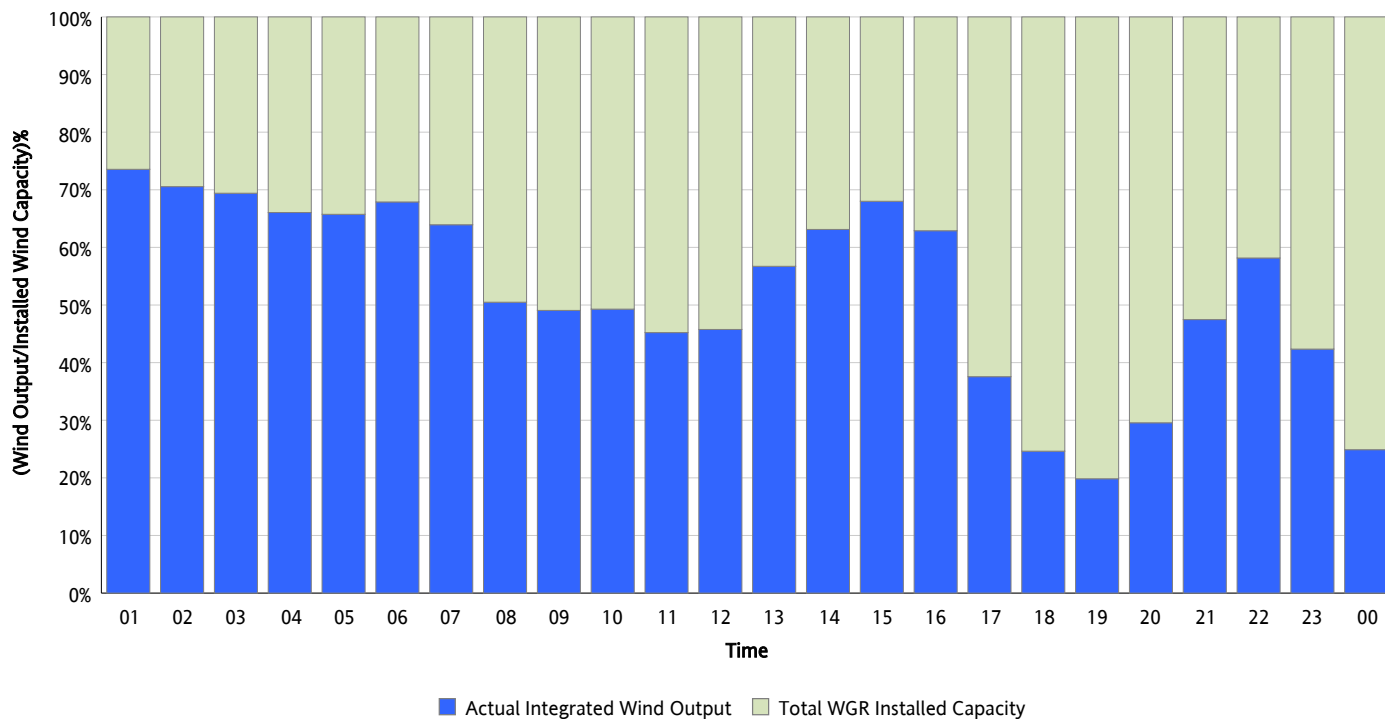
Hourly Average Actual Load vs. Actual Wind Output
03/19/2012



** Wind Record and Wind Max represent instantaneous values and the rest of the values are integrated over the hour*

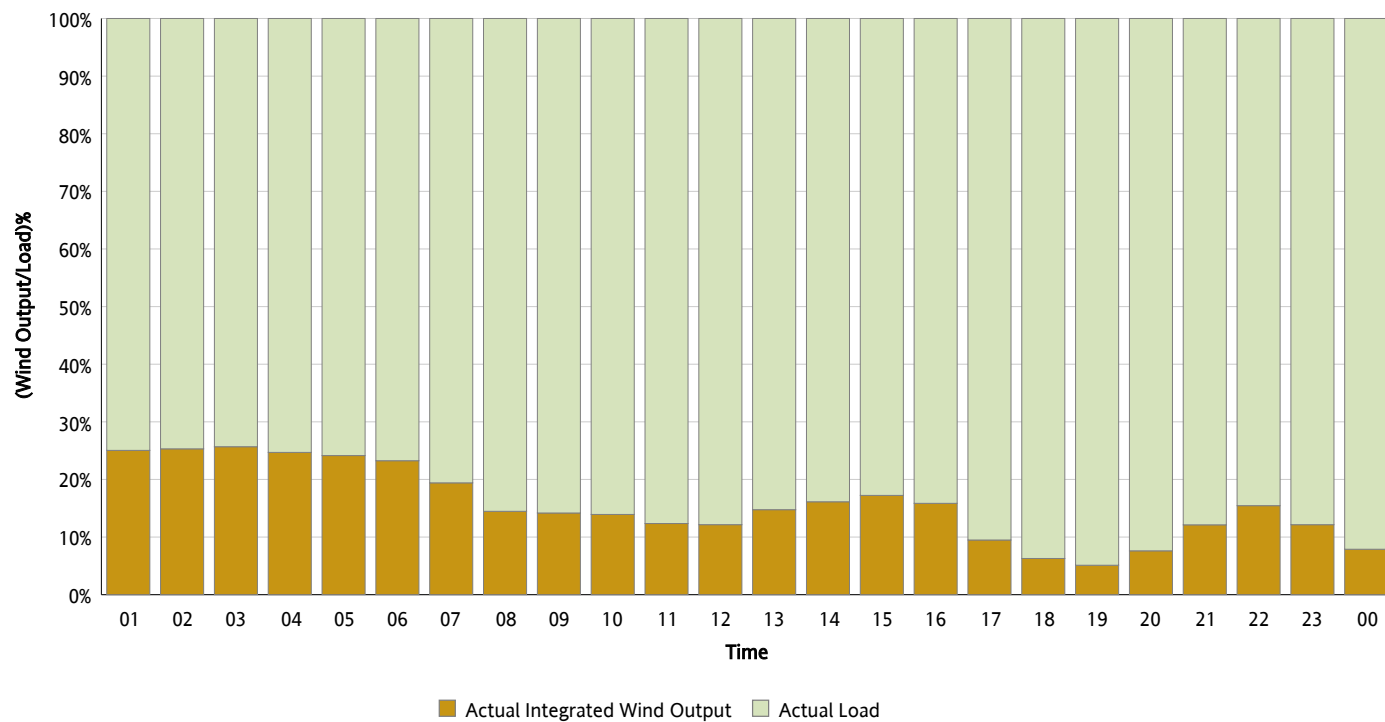
Actual Wind Output as a Percentage of the Total Installed Wind Capacity

03/19/2012



Actual Wind Output as a Percentage of the ERCOT Load

03/19/2012



ERCOT Load vs. Actual Wind Output

03/12/2012 - 03/19/2012

